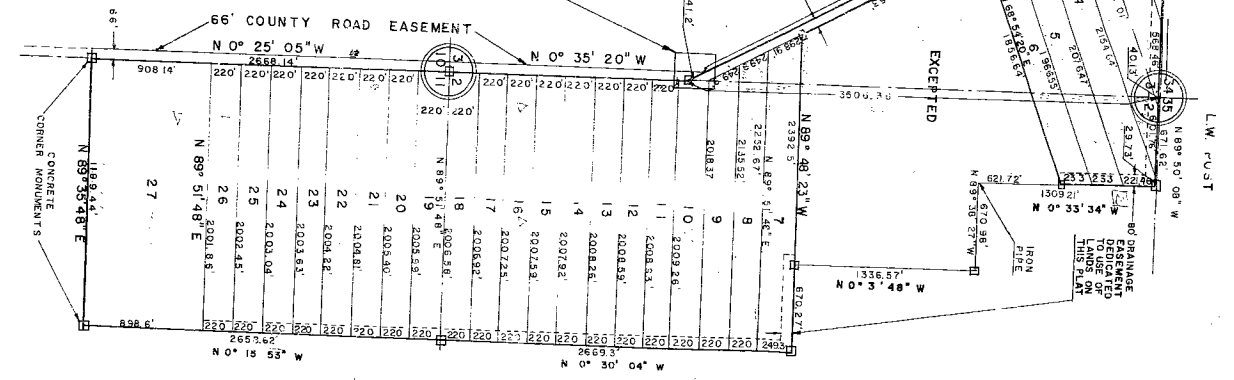
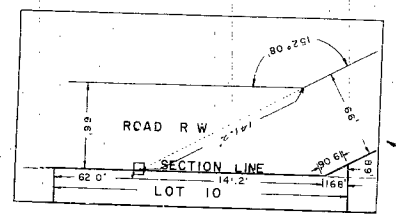
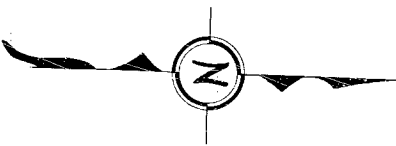


CONDITION OF DOCUMENT
UNSUITABLE FOR MICROFILMING

20:1

SCALE
1" = 500'



T 38 S
T 39 S
R 38 E

L.W. POST

POWELL THAXTON

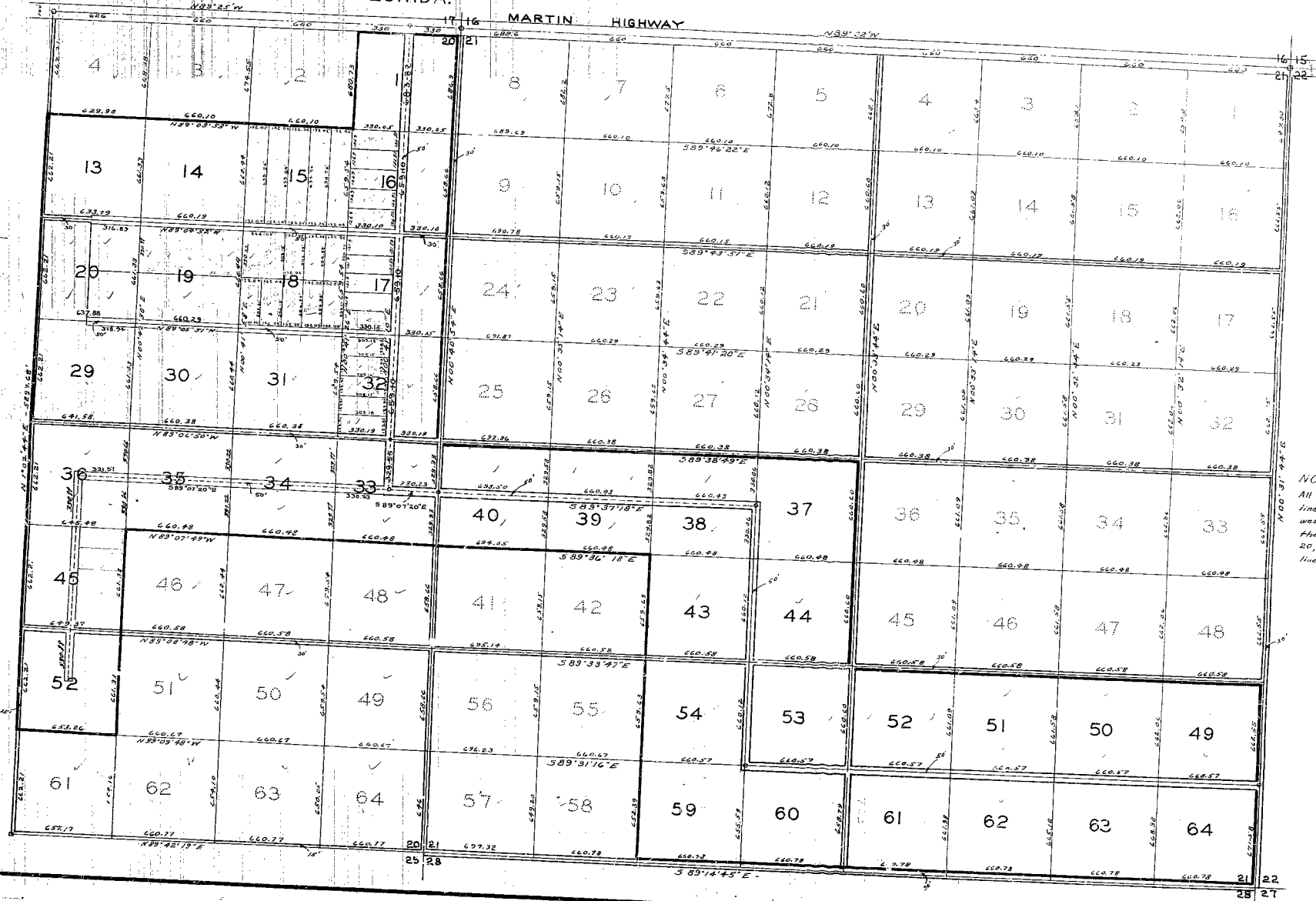
PALMA VISTA

Being Lots 1, 13, 14, 15, 16, 17, 18, 19, 20, 29, 30, 31, 32, 33, 34, 35, 36, 45, and 52, Section 20, and Lots 37, 38, 39, 40, 43, 44, 49, 50, 51, 52, 53, 54, 59, 60, 61, 62, 63, and 64, all in Twp 38 South, Rge 40 East, as recorded in Plat Book 6, Page 48, Public Records of Palm Beach County, "Palm City Farms".

MARTIN COUNTY FLORIDA.

SCALE 1" = 300'

STAFFORD BROWN
 Engineering - Land Surveying
 STUART, FLORIDA
 6-1, 15-14, 1958



NOTE:
 All measurements are to the center-line of the Roads, except along the west line of the East half and along the South line of East half of Sec. 20, where measures are to the section line.

CONDITION OF RECORDS
 UNSUITABLE FOR MICROFILMING

22:1

MOBILE HOME GARDENS

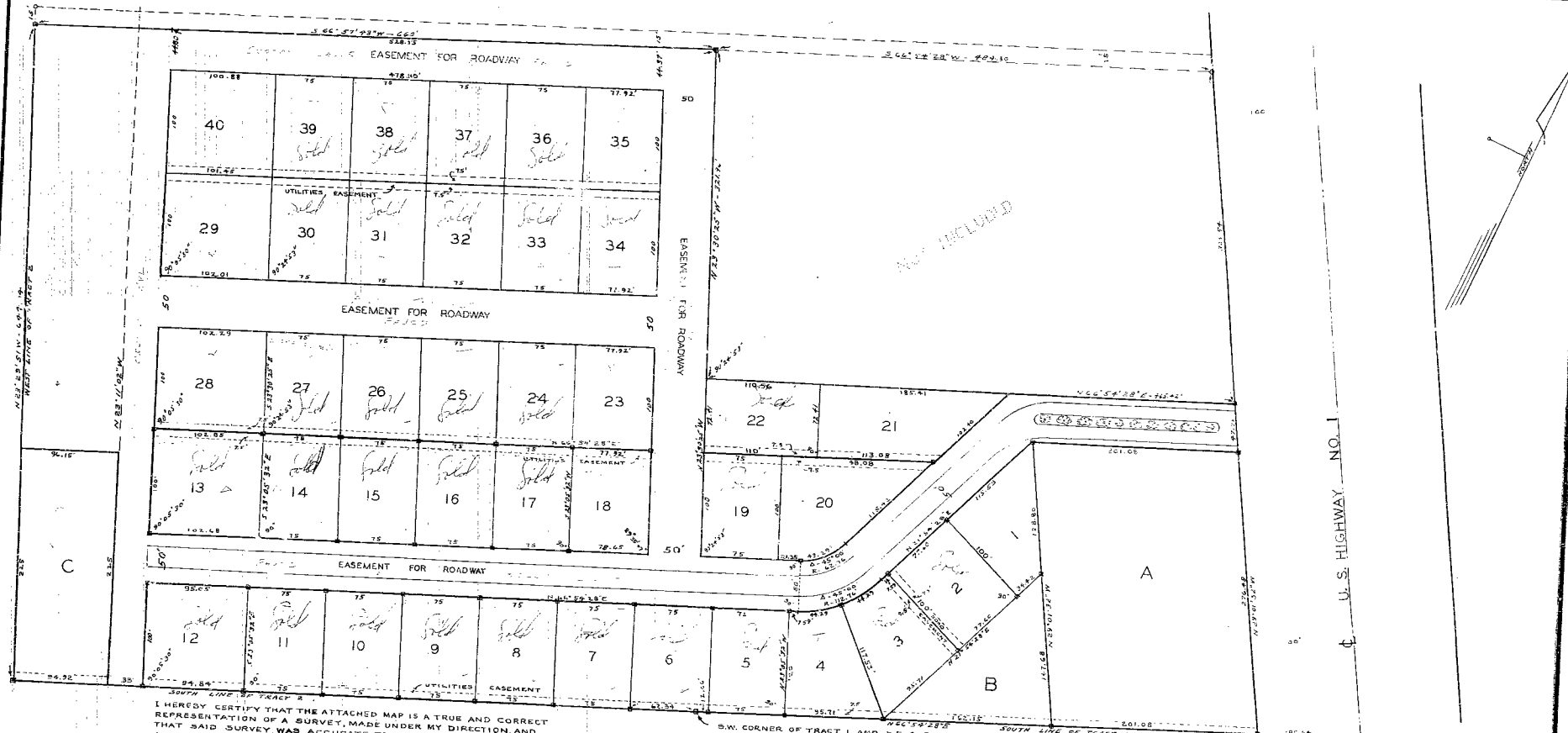
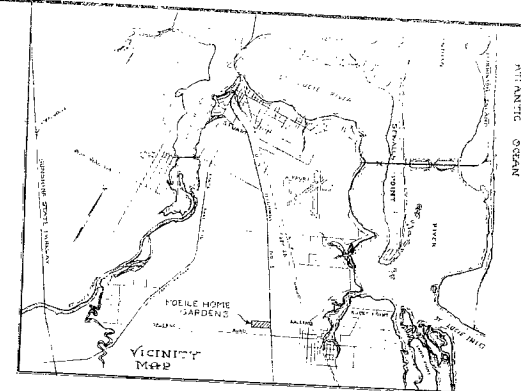
BEING PART OF TRACTS 1 & 2, BLOCK 70, ST. LUCIE INLET FARMS S/D,
 PLAT BK. 1, PG. 98, PUBLIC RECORDS OF PALM BEACH COUNTY, NOW
 MARTIN COUNTY, FLORIDA.

CORRECTION OF SURVEY
 UNSUBSTANTIATED FOR RECORDATION

SCALE 1" = 50'

22:1

JANUARY 1962
 SURVEYED
 JANUARY 7, 1963



I HEREBY CERTIFY THAT THE ATTACHED MAP IS A TRUE AND CORRECT REPRESENTATION OF A SURVEY MADE UNDER MY DIRECTION, AND THAT SAID SURVEY WAS ACCURATE TO THE BEST OF MY KNOWLEDGE AND BELIEF.

James C. Brock
 REGISTERED LAND SURVEYOR
 FLORIDA LICENSE NO. 544

S.W. CORNER OF TRACT 1 AND S.E. CORNER OF TRACT 2, BLOCK 70, OF ST. LUCIE INLET FARMS SUBDIVISION

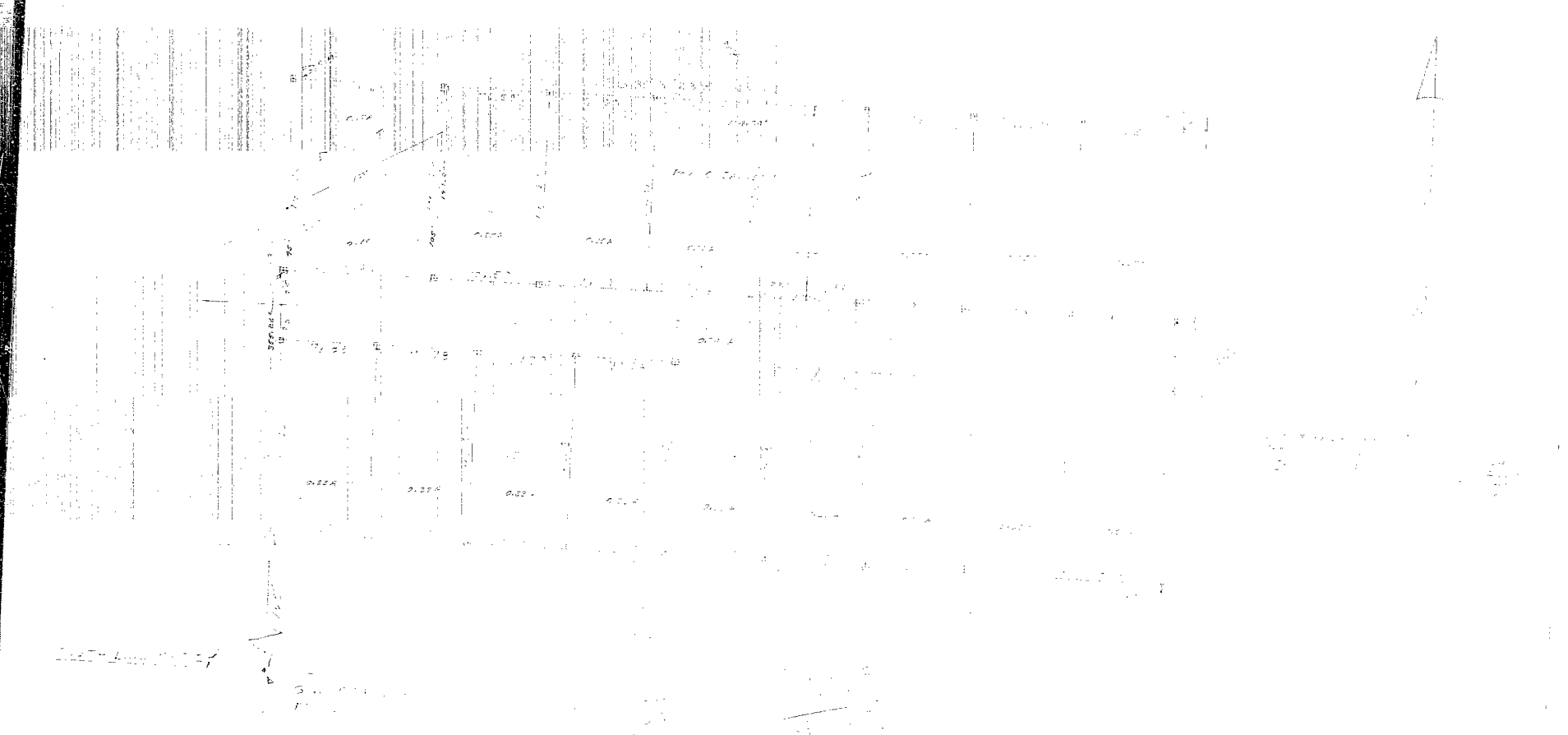
□ - CONCRETE MONUMENT

STAFFORD & BROCK
 ENGINEERING-SURVEYING
 38 EAST OCEAN BLVD.
 STUART, FLORIDA
 FILE: 25-27

Field Book

ALL INFORMATION CONTAINED
HEREIN IS UNCLASSIFIED
DATE 10/15/98 BY 6032 BSE/PA

10/15/98

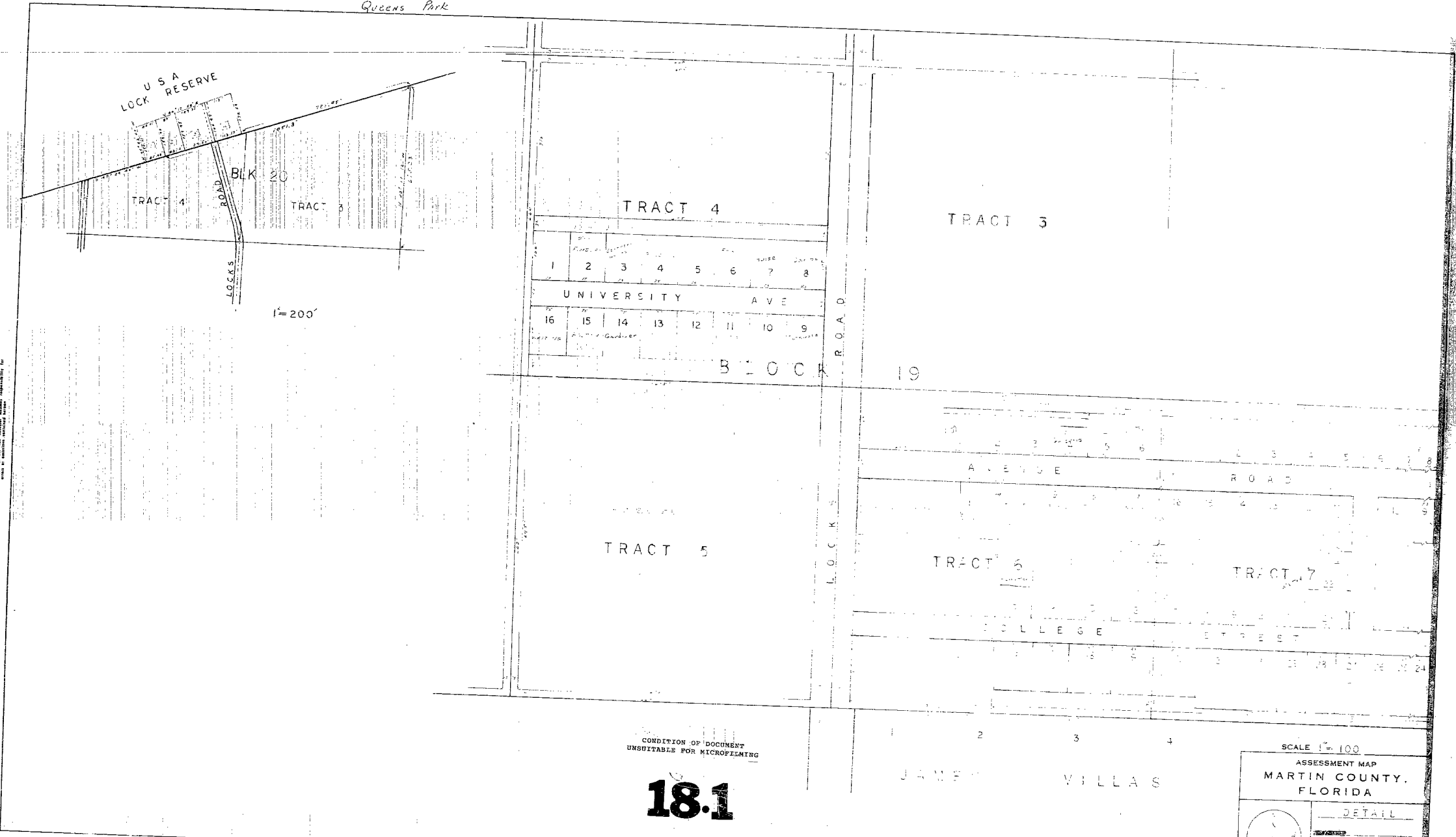


16:1

CONDITION OF DOCUMENT
UNSATISFACTORY FOR MICROFILMING

DRAWN BY	
DATE	
10/15/98	FIELD BOOK
10/15/98	PAGE # OF

Queens Park



CONDITION OF DOCUMENT
UNSATISFACTORY FOR MICROFILMING

18.1

JAMES VILLAS

SCALE 1" = 100'

ASSESSMENT MAP
MARTIN COUNTY,
FLORIDA

DETAIL

REVISIONS

NO.	DATE
5	
E	

PAGE NO. 34

Queens Park

U S A
LOCK RESERVE

TRACT 4

TRACT 3

BLK 20

LOCKS ROAD

1" = 200'

TRACT 4

TRACT 3

1	2	3	4	5	6	7	8
UNIVERSITY				AVE			
16	15	14	13	12	11	10	9

BLOCK

19

LOCKS ROAD

TRACT 5

AVENUE

ROAD

TRACT 6

TRACT 7

COLLEGE

STREET

JAMES VILLAS

SCALE 1" = 100'

ASSESSMENT MAP
MARTIN COUNTY,
FLORIDA

DETAIL

DATE _____

DRAWN BY _____

PAGE H-34